

# LOVE ASLEEP

Duration: 2'10"

## Glee for Brass Trio

Samuel Long (c.1725-1764)

Arranged by James Moule

**Moderato** ♩ = 120

1st Trombone

2nd Trombone

E♭ Tuba

**A**

**B**

**C**

**D**

**Largo** ♩ = 72

**Vivace** ♩ = 148

**Rall.** *tr*

## 1st Trombone

## LOVE ASLEEP

Duration: 2'10"

## Glee for Brass Trio

Samuel Long (c.1725-1764)  
Arranged by James Moule

**Moderato** ♩ = 120

**A**

*p* *f* *p*

12

21 **B** *f* *ff*

31 **C** *f* *p* *mp*

41 **D** 2 *f* *p*

51 **Largo** ♩ = 72 *p* Rall.

60 *tr* **Vivace** ♩ = 148 *f* *p*

## 2nd Trombone

## LOVE ASLEEP

Duration: 2'10"

Glee for Brass Trio

Samuel Long (c.1725-1764)  
Arranged by James Moule

**Moderato** ♩ = 120

**A**

12

**B**

23

**C**

33

**D**

42

**Largo** ♩ = 72

52

Rall.

62

**Vivace** ♩ = 148

E♭ Tuba

# LOVE ASLEEP

Duration: 2'10"

Glee for Brass Trio

Samuel Long (c.1725-1764)

Arranged by James Moule

Moderato ♩ = 120



# LOVE ASLEEP

Duration: 2'10"

## Glee for Brass Trio

Samuel Long (c.1725-1764)

Arranged by James Moule

**Moderato** ♩ = 120

1st Trombone

2nd Trombone

E♭ Tuba

**A**

**B**

**C**

**D**

**Largo** ♩ = 72

**Vivace** ♩ = 148

**Rall.**

## 1st Trombone

## LOVE ASLEEP

Duration: 2'10"

## Glee for Brass Trio

Samuel Long (c.1725-1764)  
Arranged by James Moule

**Moderato** ♩ = 120

The musical score for the 1st Trombone part of 'Love Asleep' is written in bass clef with a key signature of one flat (Bb) and a 3/4 time signature. The piece is in 3/4 time and consists of 60 measures. The tempo is Moderato (♩ = 120). The score is divided into sections A, B, C, and D. Section A (measures 11-20) starts with a piano (p) dynamic and ends with a forte (f) dynamic. Section B (measures 21-30) starts with a forte (f) dynamic and ends with a mezzo-piano (mp) dynamic. Section C (measures 31-40) starts with a fortissimo (ff) dynamic and ends with a mezzo-piano (mp) dynamic. Section D (measures 41-50) starts with a forte (f) dynamic and ends with a piano (p) dynamic. The piece concludes with a Largo section (measures 51-60) in common time (C) with a tempo of ♩ = 72, marked with a piano (p) dynamic and a Rall. (Ritardando) instruction. The final section is Vivace (measures 61-70) in 3/4 time with a tempo of ♩ = 148, marked with a forte (f) dynamic and a piano (p) dynamic. The score includes various musical notations such as slurs, ties, and trills.

11 **A**

21 **B**

30 **C**

40 **D**

50 **Largo** ♩ = 72 **Rall.**

60 **Vivace** ♩ = 148

## 2nd Trombone

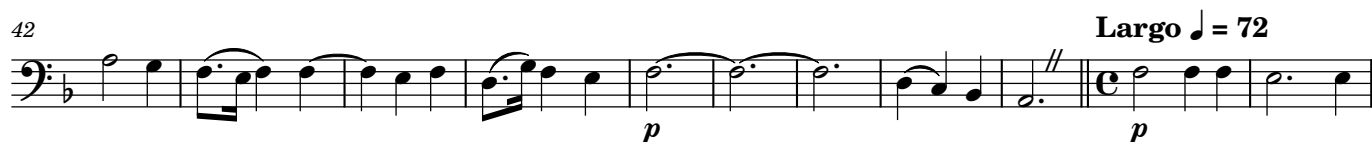
## LOVE ASLEEP

Duration: 2'10"

## Glee for Brass Trio

Samuel Long (c.1725-1764)  
Arranged by James Moule

Moderato ♩ = 120



3 Bass Trombone

# LOVE ASLEEP

Duration: 2'10"

Glee for Brass Trio

Samuel Long (c.1725-1764)  
Arranged by James Moule

**Moderato** ♩ = 120



11 **A**



**Largo** ♩ = 72



62 **Vivace** ♩ = 148

