

# SONATA A QUATTRO

Duration: 5 minutes

## Quartet for Brass

Arcangelo Corelli (1653-1713)

Arranged by James Moule

1. Adagio  $\text{♩} = 60$

Cornet 1 *mf*

Cornet 2 *mf* *p* *mf*

Cornet 3 *mf* *p* *mf*

E♭ Tuba *mf* *p* *mf*

8

2. Allegro  $\text{♩} = 108$

*p* *p* *p* *p* *f* *f*

13

18 **A** *mf* *mf* *mf* *mf*



50

*pp* *p* *p*

65

4. Allegretto ♩ = 100

*mf* *mf* *mf* *mf* *p*

77

*p*

82

*p*

88

Rit.

5. Allegro ♩ = 80

*p* *mf* *mf* *p*

95

This musical score segment contains measures 95 through 102. It features four staves: three vocal staves (Soprano, Alto, Tenor) and one piano accompaniment staff. The key signature has one sharp (F#). Measure 95 is marked with a box containing the letter 'E'. The piano part includes dynamic markings of *mp* (mezzo-piano) and *f* (forte). The vocal parts have various lyrics written below them, including 'The Rose Tree', 'The Rose Tree', 'The Rose Tree', 'The Rose Tree', 'The Rose Tree', 'The Rose Tree', 'The Rose Tree', and 'The Rose Tree'. The score ends with a double bar line at the end of measure 102.

103

*p*

*p*

*p*

*p*

*mp*

*mp*

**F**

109

mp

mf

mp

mf

mf

mf

[illegible]

Cornet 1 (in Eb)

# SONATA A QUATTRO

## Quartet for Brass

Duration: 5 minutes

Arcangelo Corelli (1653-1713)

Arranged by James Moule

**1. Adagio** ♩ = 60

**2. Allegro** ♩ = 108

**3. Grave** ♩ = 60

2

58 D

*p*

70 **4. Allegretto** ♩ = 100

*mf*

78

82

*p*

88 **5. Allegro** ♩ = 80

*mf*

96 E

*f*

103

*p*

108 F

*mp* *mf*

116

*f* *ff* *Rall.* *tr*

Cornet 1 (in Bb)

# SONATA A QUATTRO

## Quartet for Brass

Duration: 5 minutes

Arcangelo Corelli (1653-1713)

Arranged by James Moule

**1. Adagio** ♩ = 60

*mf* *mf* *p*

**2. Allegro** ♩ = 108

*f* *mf* *mp* *f* *p*

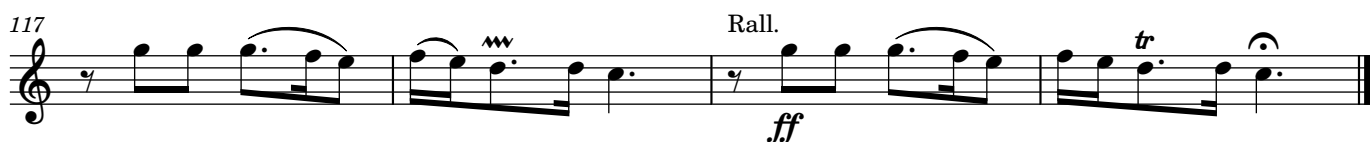
**3. Grave** ♩ = 60

*p* *pp*

**A** **B** **C**

**Rit.**

2



Cornet 2  
(Eb Cornet)

# SONATA A QUATTRO

## Quartet for Brass

Duration: 5 minutes

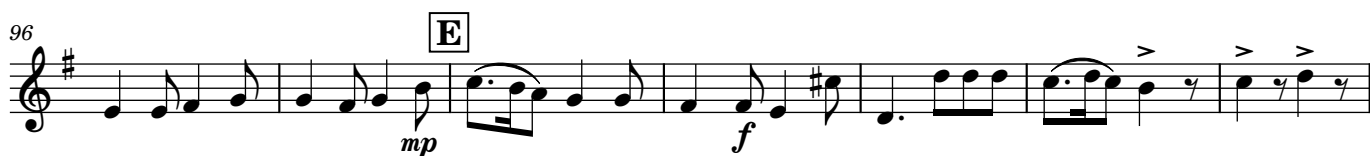
Arcangelo Corelli (1653-1713)  
Arranged by James Moule

**1. Adagio** ♩ = 60

**2. Allegro** ♩ = 108

Measures 1-40 are shown, including repeat signs A, B, and C.

2



Cornet 2

# SONATA A QUATTRO

## Quartet for Brass

Duration: 5 minutes

Arcangelo Corelli (1653-1713)

Arranged by James Moule

### 1. Adagio ♩ = 60

### 11 2. Allegro ♩ = 108

2

## 46 3. Grave ♩ = 60



# Cornet 3

## SONATA A QUATTRO

### Quartet for Brass

Duration: 5 minutes

Arcangelo Corelli (1653-1713)

Arranged by James Moule

**1. Adagio** ♩ = 60

*mf* *p* *mf*

**2. Allegro** ♩ = 108

*p* *f*

**A**

**B**

*mp*

**C**

*mf*

*f* *p* *mp* *mf*

**3. Grave** ♩ = 60

*f* *p* *p*

Rit.



E♭ Tuba

# SONATA A QUATTRO

## Quartet for Brass

Duration: 5 minutes

Arcangelo Corelli (1653-1713)  
Arranged by James Moule

### 1. Adagio ♩ = 60



7

### 2. Allegro ♩ = 108



15



22



31



38



44

Rit.

### 3. Grave ♩ = 60



55



2

68 **4. Allegretto** ♩ = 100  
*mf*

77

81

86 **5. Allegro** ♩ = 80  
*p* *mf* *Rit.*

92 *mp*

98 **E** *f*

104 *p* **F** *mp*

110 *mf*

116 *f* *ff* *Rall.*

E♭ Tuba

# SONATA A QUATTRO

## Quartet for Brass

Duration: 5 minutes

Arcangelo Corelli (1653-1713)  
Arranged by James Moule

### 1. Adagio ♩ = 60



7

### 2. Allegro ♩ = 108



15



22



31



38



44

Rit.

### 3. Grave ♩ = 60



55



2

68 **4. Allegretto** ♩ = 100  
*mf*

77

81

86 **5. Allegro** ♩ = 80  
*p* *mf* *Rit.*

92 *mp*

98 **E** *f*

104 *p* **F** *mp*

110 *mf*

116 *f* *ff* *Rall.*