

Herr Christ, der ein'ge Gottes-Sohn BWV 601

Duration: 1 min 30 s

(Christ, the Only Son of God)
Christmas Chorale for Brass Quartet

J.S. Bach
Arranged by James Moule

Allegro moderato $\text{♩} = 112$

1st Cornet *mf* *f*

2nd Cornet *mf* *f*

Baritone *mf* *f*

Bass Trombone *mf*

10

1st *mf*

2nd *mf*

Bar. *mf*

B. Trb. *mf*

19

1st *mp* *mf*

2nd *mp* *mf*

Bar. *mp* *mf*

B. Trb. *mp* *mf*

28

1st *f* *mf*

2nd *f* *mf*

Bar. *f* *mf*

B. Trb. *f* *mf*

37

1st *f* *Allargando e rall.*

2nd *f*

Bar. *f*

B. Trb. *f*

Herr Christ, der ein'ge Gottes-Sohn BWV 601

1st cornet

(Christ, the Only Son of God)

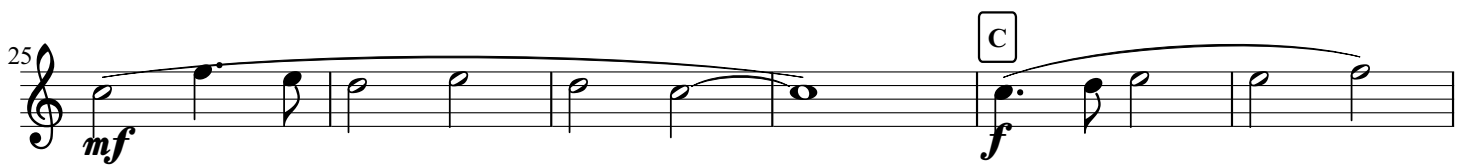
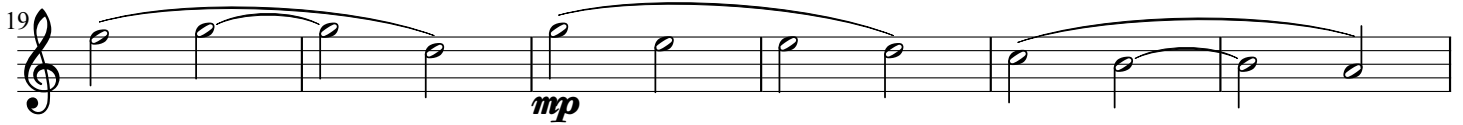
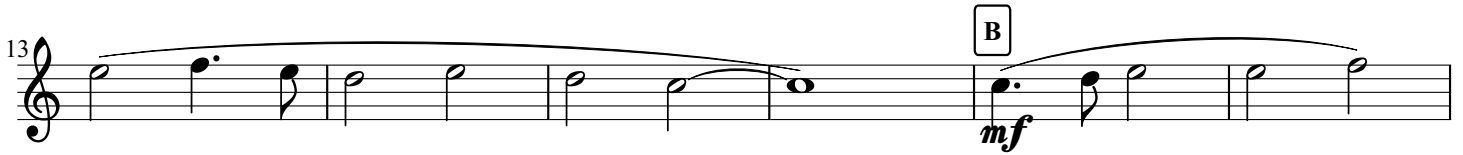
Duration: 1 min 30 s

Christmas Chorale for Brass Quartet

J.S. Bach

Arranged by James Moule

(Allegro moderato) ♩ = 112



Herr Christ, der ein'ge Gottes-Sohn BWV 601

2nd cornet

(Christ, the Only Son of God)

Duration: 1 min 30 s

Christmas Chorale for Brass Quartet

J.S. Bach

Arranged by James Moule

(Allegro moderato) ♩ = 112

6 **A**

11

15 **B**

20 *mp*

24 *mf*

28 **C**

33 *mf*

37 *f*

Allargando e rall.

Herr Christ, der ein'ge Gottes-Sohn BWV 601

Baritone

(Christ, the Only Son of God)

Duration: 1 min 30 s

Christmas Chorale for Brass Quartet

J.S. Bach

Arranged by James Moule

(Allegro moderato) ♩ = 112



Herr Christ, der ein'ge Gottes-Sohn BWV 601

Bass trombone

(Christ, the Only Son of God)

Duration: 1 min 30 s

Christmas Chorale for Brass Quartet

J.S. Bach

Arranged by James Moule

(Allegro moderato) ♩ = 112

mf

A

11

B

15

mf

20

mp

24

mf

29

C

f

mf

34

f

38

Allargando e rall.