

PRELUDE Op.156 No.10

for Brass Quartet

Duration: 2 minutes

Gustav Merkel (1827-1885)

Arranged by James Moule

Larghetto ♩ = 68

1st Cornet *p*

2nd Cornet *p*

3. Euphonium *p*

4. Eb Tuba *p*

10 **A**

mp *mf* *pp* *mp*

mp *mf* *pp* *mp*

mp *mf* *pp* *mp*

mp *mf* *pp* *mp*

23 **B**

p

p

p

p

35 **C**

pp

pp

pp

pp

pp

Rit.

1st Cornet

PRELUDE Op.156 No.10

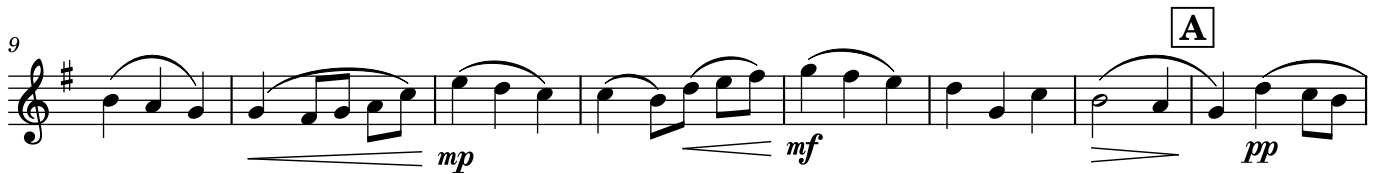
for Brass Quartet

Duration: 2 minutes

Gustav Merkel (1827-1885)

Arranged by James Moule

Larghetto ♩ = 68



2nd Cornet

PRELUDE Op.156 No.10

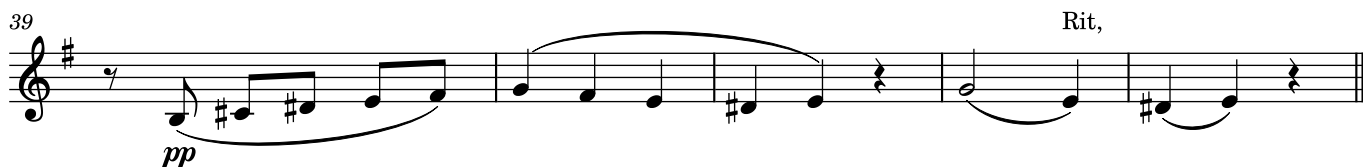
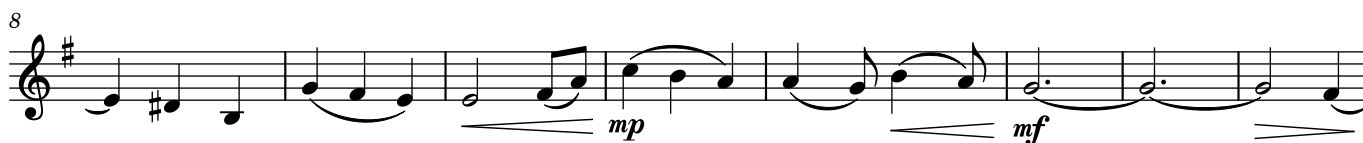
for Brass Quartet

Duration: 2 minutes

Gustav Merkel (1827-1885)

Arranged by James Moule

Larghetto ♩ = 68



4. Eb Tuba

PRELUDE Op.156 No.10

for Brass Quartet

Duration: 2 minutes

Gustav Merkel (1827-1885)
Arranged by James Moule

Larghetto ♩ = 68

p

8

mp *mf*

16 **A** **4** **B**

mp

27

p *p*

35 **C** *pp* Rit,

3. Trombone

PRELUDE Op.156 No.10

for Brass Quartet

Duration: 2 minutes

Gustav Merkel (1827-1885)

Arranged by James Moule

Larghetto ♩ = 68

First line of musical notation (measures 1-8) in bass clef, 3/4 time, key of B-flat major. It begins with a piano (*p*) dynamic. The melody consists of quarter and eighth notes with various articulations and slurs.

Second line of musical notation (measures 9-16). Measure 9 is marked with a box 'A'. Dynamics include mezzo-piano (*mp*) and mezzo-forte (*mf*). The notation features slurs and dynamic hairpins.

Third line of musical notation (measures 17-24). Dynamics include pianissimo (*pp*) and mezzo-piano (*mp*). The notation includes slurs and rests.

Fourth line of musical notation (measures 25-32). Measure 25 is marked with a box 'B'. It starts with a piano (*p*) dynamic. The notation includes slurs and dynamic hairpins.

Fifth line of musical notation (measures 33-40). Measure 33 is marked with a box 'C'. The line ends with a piano (*pp*) dynamic and a 'Rit,' (ritardando) marking. The notation includes slurs and rests.

