

Quintet for Brass

Duration: 6'40"

Louis Spohr (1784-1859)

Arranged by Alexandre Guilmant (1837-1911)

Adapted for brass by James Moule

Andante ♩ = 90

1st Cornet

2nd Cornet

3. Horn in Eb

4. Euphonium

5. Eb Tuba

9

A

18

25 **B** solo

mp p mp ppp pp mp p

32

mf

38 **C**

p p p mp

44 **D**

p p p pp p

50

E

mf *p* *mf* *p* *mp* *p* *mf* *p*

56

pp *f* *pp* *f* *pp* *mf* *pp* *f*

62

F **Piu mosso** ♩ = 100

mp f *ff* *mp f* *ff* *f* *ff* *mp f* *ff* *f* *ff*

70

mf f mf p p mp

78

mf p mp p mp p

84 **G**

f p f p pp mp

91 **H**

mp p mp f mf

100

mf mp mp mp mp

106

mf p f mf p f mf p f

113

p f mp mp mp mp mp mp

121

mp mf mf f mp

129

K

f *mf* *mf* *f* *mf*

136

L

f *f* *mp* *f* *mp* *f* *mp*

144

f *f* *f* *f* *f* *f* *f*

151

rall.

ff *ff* *ff* *ff* *ff* *ff* *ff*

1st Cornet

PSALM 24
Quintet for Brass

Duration: 6'40"

Louis Spohr (1784-1859)
Arranged by Alexandre Guilmant (1837-1911)
Adapted for brass by James Moule

Andante ♩ = 90

7

14 **A** *mf* *mp* *mf*

22 *f* *mp*

28 **B** *p* *mp* solo

35 **C** *mf*

42 **D** *p*

50 **E** *mf* *p* *pp*

58 *f* *mp* *f*

65 **F** Piu mosso ♩ = 100 *ff*

73 *mf* *mp*

80 G

87 *p* *f* *mp*

94 H *f* *mf*

101 *mp* *mf*

108 I *p* *f* *p* *f*

116 J *mp* *mp* 2

124 *mf* *f*

130 K *mf*

135 L *f*

142 *mp*

146 *f*

152 *ff* rall.

2nd Cornet

PSALM 24
Quintet for Brass

Louis Spohr (1784-1859)

Arranged by Alexandre Guilmant (1837-1911)

Adapted for brass by James Moule

Duration: 6'40"

Andante ♩ = 90

8

15 **A**

20

27 **B**

31

34

37 **C**

48 **D**

56

62

68 **F** **Piu mosso** ♩ = 100

f *mf* *mp* *p* *pp* *ff*

75

p

80

p *mp* *p* *f* *p*

G

88

f *p* *mp* *f*

H

96

mf *mp* *mp*

104

mf

108

p *f* *p* *f*

I

116

mp *mp* *mf*

J

124

f

130

mf

K

136

f *mp*

L

143

f

151

ff rall.

3. Horn in Eb

PSALM 24

Quintet for Brass

Duration: 6'40"

Louis Spohr (1784-1859)
Arranged by Alexandre Guilmant (1837-1911)
Adapted for brass by James Moule

Andante ♩ = 90

Measures 1-78 include the following dynamics and markings:

- Measures 1-7: *f*
- Measure 8: *f*
- Measures 18-25: *mp*, *mf*, *f*
- Measures 26-30: *pp*
- Measures 31-37: *p*
- Measures 38-44: *p*
- Measures 45-50: *p*
- Measures 51-56: *p*, *pp*, *f*
- Measures 64-70: *ff*
- Measures 71-76: *f*, *p*
- Measures 77-78: *mp*, *p*

Section markers: A (measures 10-11), B (measures 26-27), C (measures 38-39), D (measures 45-46), E (measures 51-52), F (measures 64-65).

Tempo change: **Piu mosso** ♩ = 100 (starting at measure 64).

2

83 **G**

mp *p* *f* *pp* *mp*

89 **H**

p *mp* *f*

95

mf *mf* *mp*

102

107 **I**

mf *p* *f*

113 **J**

p *f* *mp*

120

mf

126

2 *f*

133 **K**

mf *f*

139 **L**

mp

145

f

151 *ff* *rall.*

3. French Horn

PSALM 24

Quintet for Brass

Duration: 6'40"

Louis Spohr (1784-1859)
Arranged by Alexandre Guilmant (1837-1911)
Adapted for brass by James Moule

Andante ♩ = 90

8 **A**

18 **B**

26 **C**

31

34

37 **D**

44 **E**

49 **F** **Piu mosso** ♩ = 100

63

70

77

2

82 G

88

93 H

100

104

109 I

114 J

121

128 K

136 L

141

147

153 *ff* *rall.*

mp *p* *f* *pp*

mp *p* *mp*

f *mf* *mf*

mp

mf

p *f* *p*

f *mp*

mf

f *mf*

f *mp*

f *mp*

f *ff* *rall.*

4. Euphonium

PSALM 24 Quintet for Brass

Duration: 6'40"

Louis Spohr (1784-1859)
Arranged by Alexandre Guilmant (1837-1911)
Adapted for brass by James Moule

Andante ♩ = 90

11 **A** *f* *mf* *mp*

20 *mf* *f* *mp*

29 **B** *p*

38 **C**

42

48 **D** *pp*

52 *mp* *p* **E**

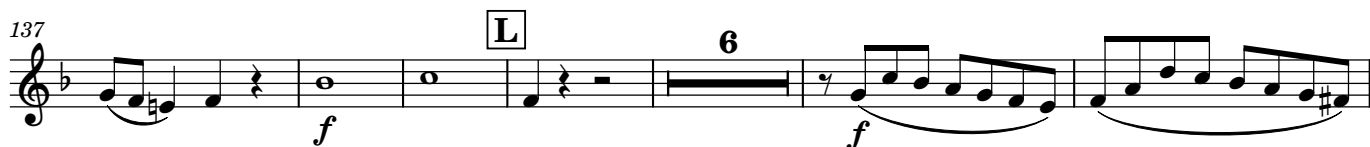
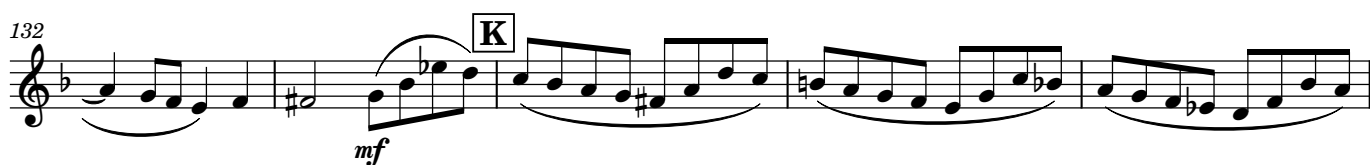
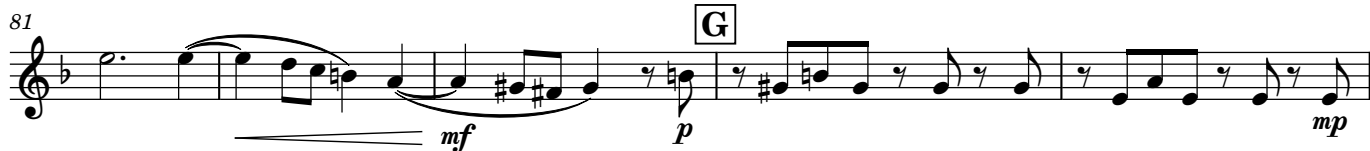
56 *pp*

60 *mf* *mp* *f*

64 **F** *Piu mosso* ♩ = 100 *ff* *mf*

73 *mp* *p*

2



4. Trombone

PSALM 24
Quintet for Brass

Duration: 6'40"

Louis Spohr (1784-1859)
Arranged by Alexandre Guilmant (1837-1911)
Adapted for brass by James Moule

Andante ♩ = 90

11 **A** *f* *mf* *mp*

20 *mf* *f* *mp*

29 **B** *p*

38 **C**

42

48 **D** *pp*

52 **E** *mp* *p*

56 *pp*

60 *mf* *mp* *f*

64 **F** Piu mosso ♩ = 100 *ff*

72 *mf* *mp* *p*

2

80

80-84: Bass clef, key signature of two flats. Measures 80-84 contain eighth and sixteenth notes with slurs. Dynamics: *mf* (measures 80-82), *p* (measures 83-84). A box labeled 'G' is above measure 83.

85

85-89: Bass clef, key signature of two flats. Measures 85-89 contain eighth and sixteenth notes with slurs. Dynamics: *mp* (measures 85-86), *pp* (measures 87-88), *mp* (measure 89).

90

90-96: Bass clef, key signature of two flats. Measures 90-96 contain eighth and sixteenth notes with slurs. Dynamics: *f* (measures 90-92), *f* (measures 93-94), *f* (measures 95-96). A box labeled 'H' is above measure 93.

97

97-104: Bass clef, key signature of two flats. Measures 97-104 contain eighth and sixteenth notes with slurs. Dynamics: *mf* (measures 97-98), *mp* (measures 99-100), *mp* (measures 101-102), *mp* (measures 103-104).

105

105-110: Bass clef, key signature of two flats. Measures 105-110 contain eighth and sixteenth notes with slurs. Dynamics: *mf* (measures 105-106), *mf* (measures 107-108), *p* (measures 109-110). A box labeled 'I' is above measure 109.

111

111-115: Bass clef, key signature of two flats. Measures 111-115 contain eighth and sixteenth notes with slurs. Dynamics: *f* (measures 111-112), *p* (measures 113-114), *f* (measure 115).

116

116-123: Bass clef, key signature of two flats. Measures 116-123 contain eighth and sixteenth notes with slurs. Dynamics: *mp* (measures 116-117), *mp* (measures 118-119), *mp* (measures 120-121), *mp* (measures 122-123). A box labeled 'J' is above measure 116.

124

124-131: Bass clef, key signature of two flats. Measures 124-131 contain eighth and sixteenth notes with slurs. Dynamics: *mp* (measures 124-125), *mp* (measures 126-127), *mp* (measures 128-129), *mp* (measures 130-131).

132

132-136: Bass clef, key signature of two flats. Measures 132-136 contain eighth and sixteenth notes with slurs. Dynamics: *mf* (measures 132-133), *mf* (measures 134-135), *mf* (measures 136-137). A box labeled 'K' is above measure 132.

137

137-148: Bass clef, key signature of two flats. Measures 137-148 contain eighth and sixteenth notes with slurs. Dynamics: *f* (measures 137-138), *f* (measures 139-140), *f* (measures 141-142), *f* (measures 143-144), *f* (measures 145-146), *f* (measures 147-148). A box labeled 'L' is above measure 137. A bracket labeled '6' is above measures 141-142.

149

149-156: Bass clef, key signature of two flats. Measures 149-156 contain eighth and sixteenth notes with slurs. Dynamics: *ff* (measures 149-150), *ff* (measures 151-152), *ff* (measures 153-154), *ff* (measures 155-156). A box labeled 'M' is above measure 149. A bracket labeled '6' is above measures 151-152. The word 'rall.' is above measure 153.

5. Eb Tuba

PSALM 24 Quintet for Brass

Duration: 6'40"

Louis Spohr (1784-1859)
Arranged by Alexandre Guilmant (1837-1911)
Adapted for brass by James Moule

Andante ♩ = 90
3

11 **A** *mf*

19 *mp* *mf* *f*

25 **B** *mp* *p*

32

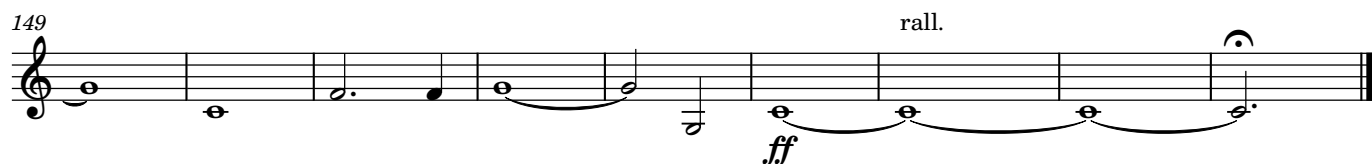
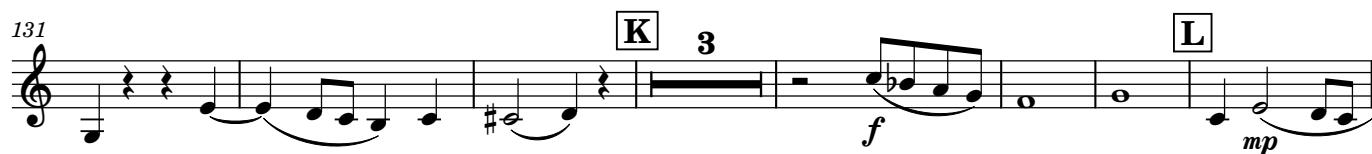
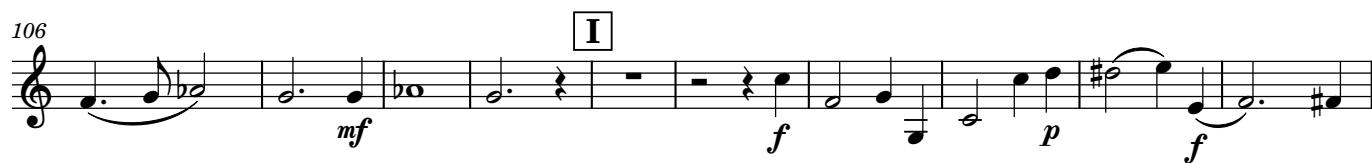
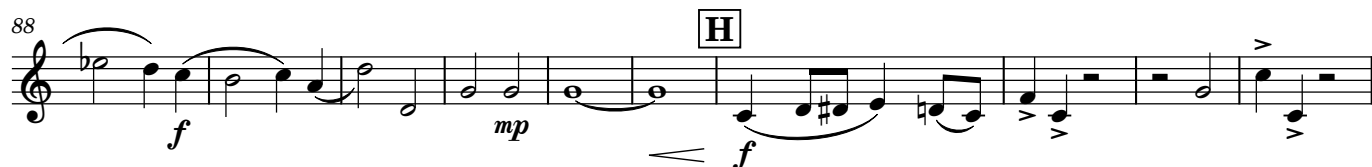
38 **C** *mp*

47 **D** *p* *mf*

55 **E** *p* *pp* *f*

63 **F** **Piu mosso** ♩ = 100 *ff*

2



5. Tuba

PSALM 24 Quintet for Brass

Louis Spohr (1784-1859)

Arranged by Alexandre Guilmant (1837-1911)

Adapted for brass by James Moule

Duration: 6'40"

Andante $\text{♩} = 90$
3

11

18

24

31

37

45

53

60

f

mf

mp

p

pp

A

B

C

D

E

2

66

F Piu mosso ♩ = 100

74



81



91



101



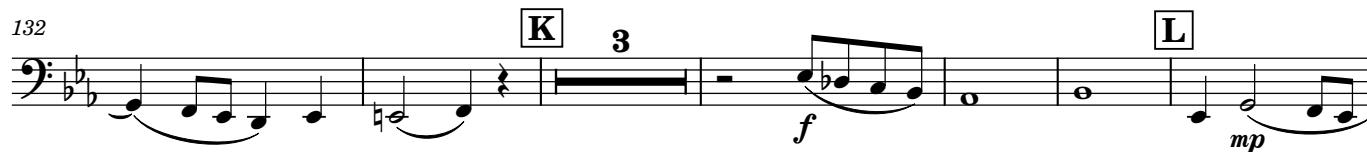
108



118



132



141



148

